

SOLO TUBA

Dedicated to the London Symphony Orchestra.
First performed by Philip Catelinet at the L.S.O. Jubilee Concert, 19th June, 1954.

CONCERTO FOR BASS TUBA

R. VAUGHAN WILLIAMS

Allegro moderato (♩ = 96)

p cantabile

cresc.

f

p

f

p cantabile

f

f

p dolce

f *p*

f *p*

SOLO TUBA

6

p cantabile

f

7

leggiero

mf

f

8

p

9

f *p* *f*

SOLO TUBA

3 3 3

10 legato
f cantabile

3

4 11 4 7 12 6

f

CADENZA

ff → *p*

.....

accel. Lento

a tempo
leggiero

f Tranquillo
p

Largamente
pp < *f* > *p*

..... may be omitted if preferred



Hector Berlioz
Symphonie Fantastique, Op. 14

Tuba I.

I. II. e III. tacent.

IV.

Gang zum Hochgericht.

Marche au Supplice. The Procession to the Stake.

Allegretto non troppo. (♩ = 72)

5 Fag. 3

6 7 8 9 p

50 21 Bassi. 51 8 52 10

11 Fag. p cresc. mf

54 7 mf

55 5

Detailed description of the musical score: The score is written for Tuba I in bass clef with a key signature of two flats. It consists of nine staves of music. The first staff begins at measure 5 and includes a 'Fag.' instruction. Measures 50-52 are boxed. The second staff includes 'Bassi.' and 'ff' dynamics. The third staff includes 'Fag.', 'p', 'cresc.', and 'mf' dynamics. The fourth staff continues the melodic line. The fifth staff includes 'f' and 'ff' dynamics. The sixth staff includes 'mf' and '7' markings. The seventh staff continues the melodic line. The eighth staff continues the melodic line. The ninth staff includes 'f' and 'ff' dynamics and ends at measure 55.

Berlioz — Symphonie Fantastique

2

Tuba I.

56

mf *cresc.* *f*

ff *ff*

57

dim. *p* *pp* *ff* *ff*

58

f *ff* *ff*

59

f *ff*

rall. poco *a tempo*

ff *f* *ff*

V.

Hexensabbath.

Songe d'une nuit du Sabbat. A witches' sabbath.

Larghetto. (♩ = 63)

4 Viol. *pizz.* 60

61 5 Viol. 62

Allegro. (♩ = 112) 6 Clar. 8 *ff* Allegro assai. (♩ = 67)

63 Allegro. (♩ = 104) 21 64 4

ff

Berlioz — Symphonie Fantastique

Tuba I.

Viol.

5 6 7 8 *ff*

4 *ff* 2 (*d=d.*) *f*

65 19 (Campane Glocken) 66 *senza accel.* 19 1 2 3 4 5 6 *f*

Viol. 14 67 1 *f*

10 68 *f*

14 69 15 16 17 70 *f cresc.* *ff*

Hexenrundtanz.
Ronde du Sabbat.
Witches' round dance.
Poco meno mosso. 5

5 71 5

5 72 14 73 13

74 6 3 3

75 *f* *p* *ff* *p*

3 76 9 77 16 77 16

ff *p* *ff*

Berlioz — Symphonie Fantastique

Tuba I.

4

Viol.
1 2 3 4

78 16 79 16 80

3 81 7

82 8 83 20

21 22 23

84

4 1

85 1

f *cresc. molto* *ff*

f *ff* *poco animato*

3

1

86

ff

1

Detailed description: This page contains the musical score for the Tuba I part of the first movement of Berlioz's 'Symphonie Fantastique'. The score is written in bass clef and consists of ten staves of music. Measures 78-86 are numbered in boxes. The score includes various musical notations such as slurs, accents, and dynamic markings. The dynamics range from *f* (forte) to *ff* (fortissimo). Performance instructions include *cresc. molto* (crescendo molto) and *poco animato*. There are also some markings like 'Viol.' and 'Fl. pic.' with corresponding measure numbers. The score ends with a double bar line and a fermata.

Rakóczi indulás Marche Hongroise.

Ungarischer Marsch. Hungarian March.

R

Tuba.

H. Berlioz.
Aus Fausts Verdammung, Op. 24.

Allegro marcato. (♩ = 88)

6 7 *Trgl. 9 14 10 10 9 4 4

3 14 Tromboni. Trombe. 4

15 16 17 18 19 20

5 Tempo Lascio 3

1 4 6

Im 14. Takt schlägt der Tubaist Triangel.

Bei kleinerer Besetzung werden stets die mit * bezeichneten Noten der nicht vorhandenen Instrumente gespielt.

Stich und Druck von Breitkopf & Härtel in Leipzig.

Orch. B. 1326a

Copyright 1900, 1928 by Breitkopf & Härtel.

1957. 2. 73.

Mahler

Symphony No. 1 in D Major

Tuba

22 Wieder gemächlich wie zuvor 23 8 24 11 25 15 26 Tempo primo 27 9 28 10 29 Vorwärts

14 18 10

30 31 Vorwärts (i.u. 2. Tromp.) 32 *accel. al fine* *ff*

1 *ff* Scharf abreißen

III. Satz

Feierlich und gemessen, ohne zu schleppen

1 8 2 (i. Fag.) *pp*

pp

1 2 3 4 4 5 6 7 8 9 10

Zurückhaltend 5 Ziemlich langsam 6 Nicht schleppen *rit.* 7 *a tempo* 8

ppp 3 *rit. a tempo* 6 4

Nicht schleppen 8 *Poco riten. a tempo* 9 10 Sehr einfach u. schlicht wie eine Volksweise 11 12 *poco rit.*

4 2 8 12 13 6 7 1

(Oboe)

13 Wieder etwas bewegter 14 15 *ppp* *p*

9 2 (i.u. 2. Tromp.)

2 16 Plötzlich (i.u. 2. Tromp.)

viel schneller *mf* *pp* *ppp*

Poco rit. 17 Tempo I. *rit.* 18 9 19 11 *attacca:*

3

Tuba

Muszoorgky. Egyszerűsített
Képe

IV. Bydlo

Sempre moderato pesante

Solo

1^o poco a poco cresc.

38

39 6 40 5 41 1^o Viol.

42 Tuba

ff

43

poco dim.

f

44

sempre dim.

mf

45

p

Promenade

TACET

V. Ballet des Poussins dans leurs Coques

TACET

VI. Samuel Goldenberg und Schmuyle

TACET



31

DER RITT DER WALKÜREN

aus dem Musik-Drama

DIE WALKÜRE

von

RICHARD WAGNER.

CONTRABASS TUBA.

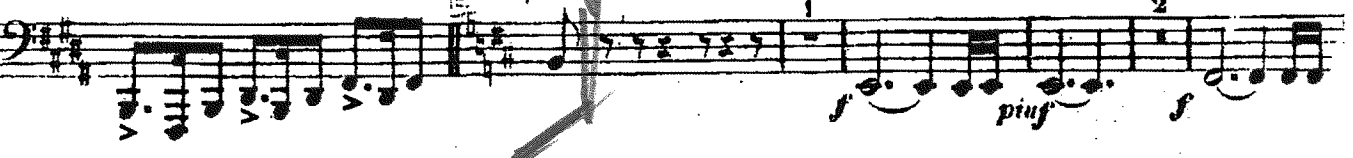
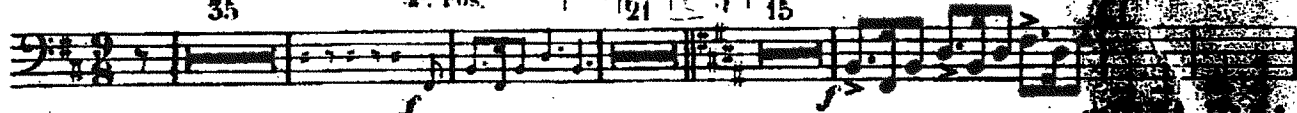
Lebhaft.

35

alt. Pos.

Handwritten notes: 4, 14, 21, 15, posan

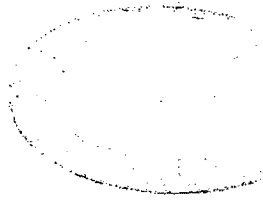
45



23

Wagner-Lohengrin-III. act-Előjáték

Tuba



44 -

EINLEITUNG.
Schr lebhaft.

1 3 1 1 19

2 3

3

1 16 4 14 15^{a tempo} 1

mf mf dim. p riten. ff

2

ff

6 15

ff dim. p



Concerto

TUBA

Bartók

3

II. GIUOCO DELLE COPPIE

Allegro scherzando $\text{♩} = 94$

TACET 90 etc.

Ist Trpt.

1 97 1 4 102 1 6 109 1 6 116

Ist Trpt.

Lo stesso tempo

123 mf

129 135

141 147 1 2 p

153 159 TACET

III. ELEGIA

Andante non troppo

9 10 1 3 14 1 7 22 1 5 28 1 Picc.

Poco rall. a tempo Ist Vln. f

34 8

1 39

1 45 1 TACET

Vltava Moldava

Symphonische Dichtung

Tuba

Bedřich Smetana
herausgegeben von Milan Pospíšil

První pramen Vltavy
First source of the Vltava
Die erste Quelle der Moldau

Allegro comodo non agitato (in 2)

Druhý pramen Vltavy
Second source of the Vltava
Die zweite Quelle der Moldau

Fl. II Solo **13** **20** **A** **19** VI. I
Cl. I/II Vc., Cb. *mf cresc.*

p lusingando

58 **11** **B** **7** VI. I **5**
sf *p* *sf* *sf* *sf*

Lesy - honba / Forests - Hunting / Wälder - Jagd

90 **4** **6** **C** **14** **4** Cl. I, VI. I
sf *sf* *mf*

Venkovská svatba / Village wedding /
Ländliche Hochzeit
L'istesso tempo ma moderato

124 **13** **D** **40** **E** Fg. II + Fg. I
pp *pp* *pp* *pp* **22**

Luna - rej rusalek / Moonlight - Dances of water-nymphs /
Mondschein - Nymphenreigen
L'istesso tempo $\text{♩} = \text{♩}$

Ob. II *pp* + Ob. I

207 VI. I **F** **1**
dim. *più pp* *ppp possibile*

217
ppp *sempre pp*

223
sempre pp

229 **G**
pp *cresc.*

236 **2** VI. I **15** **H** **11** VI. I
p *dolce* *sf* *p*

Tempo I

Svatojanské proudy / St. John's Rapids / St. Johann-Stromschnellen

271 **1**

sf *f* *cresc.* *sf*

283

sf *f*

291

sf *f*

300 **2**

sf

313 **K**

sf *sempre cresc.* *fff* *sf*

Široký tok Vltavy / Vltava, powerful stream / Der breite Strom der Moldau

325 **7** **Più moto**

ff

342

sf

L Motiv Vyšehradu / Vyšehrad motif / Vyšehrad-Motiv

ritmo di tre battute

353

sf *marcato* *ff* *sf*

365

sf *sempre ff*

377

sf *sf*

390

sf *fff*

404 **14** VI. I **rall.** **a tempo**

sf *sf* *dim. al ppp* *smorz.* *ff* *sf* *sf*

Csajkowskij 6. Szinf III-IV

TUBA

4

89 *mp* *mp* *mp* *mp* *mp*

94 *mp* *mp* H 8 I 16 K 12 L 4 Hr. I

138 M Pos. III *f*

146 *f* *mp* 3 N 12 O 8 P 6

III

Allegro molto vivace

7 A 5 B 8 C 8 D 12

43 E 8 F 2 Pos. III Trp. II Trp. I Pos. I

59 Trp. II Trp. I *p* G Pos. III

63 *mp* *mf* *f*

68 1 H 10 I 3 Viol.

86 4 K 12 L 14 M 10

129 N 2 4 O 12 Pos. III Pos. III Pos. III

152 P 8 Q 8 R 14 S Hr. I Pk. Pk.

TUBA

189 Hr. ³ T 7 U 1
Pk. *ff* *pp* *p*

206 V 1
mp W *cresc.* X *f* 7 Y *f* *ff*

219 *fff*

231

236 1 Z

242 Aa

247

251 3 Bb 5 4 Cc 6 *fff*

274 Dd *fff*

279 Ee

283 *fff*

287 1

TUBA

Ff
292

Gg
297

sempre fff
302

Hh
307

fff

Ii
313

p *mf*

Kk
319

f *ff*

Ll
324

fff

1

sempre fff
330

Ll
333

337

342

TUBA

IV
Finale

Adagio lamentoso

affrettando

rall.

Andante

Adagio poco meno che prima

5 5 A 1 4 4 10 B(Fag.)7

37 Andante (Hr.) 2 C 4 poco animando riten. Tempo I Pos. I poco ani.

52 mando Pos. II riten. Pos. I Tempo I poco animando 3 3 riten. E Tempo I Pos. III

66 animando F mf cresc. f ff 3 3 3

73 Più mosso Stringendo sempre ff

78 Vivace Andante 1 2 1 3 fff

90 Andante non tanto G 13 H 5 Ob. stringendo molto Trp. I f cresc. ff

116 I Moderato assai incalzando riten. K Andante mf

129 6 L poco rallentando p mf p mp p pp

142 quasi adagio Andante giusto riten. M 8 N 13 3 p pp ppp pppp ppppp